



# YSP- MICROSCOPE & LAB PRODUCT MODELS

ONESTOPSOLUTIONSFORALLTYPESOFLABNEED



STUDENT  
MICROSCOPES



RESEARCH  
MICROSCOPES

DIGITAL  
MICROSCOPES



METALLURGICAL  
MICROSCOPES



WATER BATHS  
& CENTRIFUGE  
MACHINES



IMAGING  
CAMERAS  
&  
SOFTWARES

HEATING &  
REFRIGERATION  
INSTRUMENTS



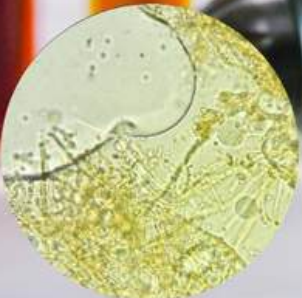
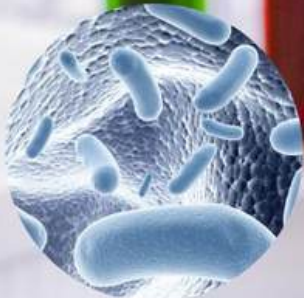
BIO SAFETY  
CABINETS,  
FUME HOODS  
& LAMINARS



# YSP- MICROSCOPE & LAB PRODUCT MODELS



**DIN TYPE OBJECTIVE**



**ANTIFUNGES COATING**

**BEST PRICE**





# INDEX

<b>★ Dissecting &amp; Educational Microscopes</b>	<b>01</b>
Dissecting Microscope MD-1 Senior Dissecting	02
Microscope MD-2 Junior Student Microscope	03
BM-2 Compound Student Microscope BM-3	04
Compound Student Microscope BM-4	05
Compound Student Microscope BM-3A	06
	07
<b>★ Laboratory Microscopes</b>	<b>08</b>
Medical Microscope BM-5	09
Pathological Monocular Microscope BM-6mo	10
Pathological Binocular Microscope BM-6bi	11
Pathological Monocular Microscope BM-8mo	12
Pathological Binocular Microscope BM-8bi	13
Binocular Microscope BM-9bi	14
<b>★ Ultra Series Microscopes</b>	<b>15</b>
Monocular Student Microscope BM-3	16
Junior Medical Microscope BM-4	17
Medical Microscope BM-5	18
Monocular Microscope BM-6mo	19
Monocular Microscope BM-8mo	20
Research Binocular Microscope BM-6bi	21
Binocular Microscope BM-8bi	22
<b>★ XL Series Microscopes</b>	<b>23</b>
Research Binocular Microscope AXL-BINO	24
Research Trinocular Microscope AXL-TRINO	25
Research Binocular Microscope FXL-BINO	26
Research Trinocular Microscope FXL-TRINO	27
Research Binocular Microscope VXL-BINO	28
Research Trinocular Microscope VXL-TRINO	29
Research Binocular Microscope BLXL-PLUS	30
<b>★ Fluorescent Microscopes</b>	<b>31</b>
Fluorescent Microscope AFM-50	32
Fluorescent Microscope AFM-100	33
	34
<b>★ Phase Contrast &amp; Dark Field Attachments</b>	<b>35</b>
<b>★ Inverted Tissue Culture Microscopes</b>	<b>36</b>
Inverted Tissue Culture TM-8/8A Inverted Binocular Tissue	37
Culture TM-9	38
<b>★ Stereo Zoom Microscopes</b>	<b>39</b>
Student Stereo Microscope DS-22	40
Stereo Microscope DS-50	41
Stereo Zoom Microscope DSZ-77	42
Stereo Zoom Microscope DSZ-88	43
Gemological Microscope GM-01	44
<b>★ Polarizing Microscopes</b>	<b>45</b>
Student Polarizing Microscope PM-9	46
Student Polarizing Microscope PM-10	47
Binocular Polarizing Microscope PM-11	48
Trinocular Polarizing Microscope PM-12	49
Ore Microscope OR-01	49

## Pictograms



Monocular



Binocular



Trinocular



Transmitting Illumination



Abbe Condenser



360° Rotatable Head



LED Illumination



Infinity System



Incident Illumination



Halogen Illumination



Zoom Magnification



Fluorescence Illumination



Polarising Unit



# INDEX

★ <b>Multihead Microscopes</b>	50
Pentahead Microscope X-555	51
Decahead Microscope X-10	52
★ <b>Digital Video Microscopes</b>	53
Digital Video Microscope DVM - 01	54
Digital Video Microscope DVM - 01 Plus	55
Digital Video Microscope DVM - 02	56
Digital Video Microscope DVM - 02 Plus	57
Digital Video Microscope DVM - 03	58
Digital Video Microscope DVM - 03 Plus	59
Digital Video Microscope DVM - 04 Ultra	60
★ <b>Imaging Cameras For Microscopy</b>	61
★ <b>Projection Microscopes</b>	62
ProjectionMicroscopeKW-500	63
StudentProjectionMicroscope KW-700C	64
★ <b>Heating &amp; Refrigeration Instruments</b>	64
Hot Air Oven (Thermostatic)	65
Hot Air Oven (Digital)	66
Hot Air Oven (Digital Microprocessor Based)	67
Bacteriological Incubator (Thermostatic)	68
Bacteriological Incubator (Digital)	69
Bacteriological Incubator (Digital Microprocessor Based)	70
Bacteriological Incubator (Digital)	71
★ <b>Water Baths</b>	72
Serological Water Bath (Digital/ Thermostatic)	73
Rectangular Serological Water Bath (Digital/ Thermostatic)	74
Centrifuge Machine Handi type	75
Centrifuge Machine Doctor Model	76
Digital/AnalogueCentrifuge Machine	77
★ <b>Laminar Air Flow &amp; Cabinets</b>	78
Laminar Air Flow Horizontal Wooden Microprocessor Based Laminar Air	79
Flow Vertical Stainless Steel Biosafety Cabinet Class-ii, A-2 Mild Steel	80
Biosafety Cabinet Class-ii, A-2 Stainless Steel Fume Hood Stainless	81
Steel/Mild Steel/Wooden Fume Hood Stainless Steel/Mild	82
Steel/Wooden	83
	84
★ <b>Metallurgical Microscopes</b>	85
Inclined Metallurgical Microscope MM-2	86
Binocular Metallurgical Microscope MM-3	87
Trinocular Metallurgical Microscope MM-4	88
Inverted Metallurgical Microscope MM-5	89
Inverted Metallurgical Microscope MM-5A	90
Brinell Microscope MM-6	91
Tool Maker Microscope KW-900	92
★ <b>Travelling Microscope</b>	
Travelling Microscope VM-1	93
Travelling Microscope VM-2B	94

## Pictograms



Android



Windows



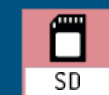
USB Interface  
3.0



USB Interface  
2.0



Software



SD Card



HDMI Interface



Integrated  
Scale



Mains adapter



Battery operation



Power supply



ISI Marked



Package  
shipment



# DISSECTING EDUCATIONAL MICROSCOPES

&

Dissecting and Student microscopes serve important purposes in the educational sector. Dissecting microscope allows students to examine larger specimens in detail, making it ideal for anatomy and morphology studies. It aids in dissecting organisms like insects, plants, and small vertebrates, facilitating the observation of intricate structures and systems. On the other hand, a Student microscope is designed for general microscopic observations. It helps students study microscopic organisms, cells, and tissues, fostering a deeper understanding of biology. Both microscopes promote hands-on learning, critical thinking, and the development of scientific skills, enabling students to explore the diverse world of biology from macroscopic to microscopic levels.



# DISSECTING MICROSCOPE MD-1



MD-1 Dissecting Microscope is used for demonstration, close study of small organisms and fine dissection work. The high-eye point lenses 10x & 20x have alternative use of a jointed arm allowing the whole stage area to be scanned .

The stage (85mm x 75mm) is provided with spring stage clips, has a glass plate with arrangement for inserting white/black metal plate for respective background substage piano-concave mirror reflects sufficient daylight and artificial light on the object.

The Rack & Pinion mechanism is enclosed within the stage support pillar, and is operated by knob on either side. Detachable hand rests on both sides of the stage providing for a steady support during dissection.

**Packaging:** Inner Thermocol/Styrofoam Packing and Outer Cardboard Box.



# SENIOR DISSECTING MICROSCOPE MD-2



MD-2 Senior Dissecting Microscope has heavy round base with a precisely designed body. Sensitive focussing is done by rack-pinion movement. A joint revolving arm is provided for moving magnifying lens overfull area of the stage. It is easily replaceable by a special bulls eye lens (83mm dia.) to increase the field of vision.

A piano-concave mirror reflects sufficient day light and artificial light on the object. Detachable hand rests on both sides of stage provided for a study support during dissection. Provided with 10x & 20x eye pieces and special bulls eye lens (83mm dia.).

Packed in wooden carrying cabinet.

**Packaging:** Inner Thermocol/Styrofoam Packing and Outer Cardboard Box.



# JUNIOR STUDENT MICROSCOPE BM-2

The excellent appearance  
in accord with ergonomic design

Integrated body design  
makes products maintains  
long-term stability.



TL



**Eye Piece:** One 10X & one 15X Hygeniun Eye-Piece

**Nosepiece:** Triple revolving nosepiece with click stops.

**Stage:** High quality S.S. Stage clips provided to hold the slide.

**Focusing:** By vertical movement of the Observation tube, with coarse adjustment using rack pinion movement and, fine motion by screw lever mechanism,

**Condenser:** Abbe condenser having Numerical aperture of 1.25 with iris Diaphragm and swing out filter holder. This condenser Unit incorporates high efficiency optical system for optimum utilization of light

**Light:** arc reflector set for using natural light to study the slide

**Objective:** Achromatic 10x and 40x.

**Packaging:** Inner Thermocol/Styrofoam Packing and Outer Cardboard Box.





This microscope have well designed heavy and sturdy pressure die casted monocular body inclinable to 90° to meet the requirements of School and college students

**Eye Piece:** Wide-Field 10X Eye-piece or set of 10x & 15x Huygenian Eye-pieces. **Nosepiece:** Triple revolving nosepiece with click stops. **Stage:** High quality S.S. Stage clips provided to hold the slide. **Focusing:** By vertical movement of the observation tube, with coarse adjustment using rack-pinion movement and fine motion by screw level mechanism. **Condenser:** Abbe condenser having Numerical aperture of 1.25 with iris diaphragm and swing out filter holder. **Illumination:** Arc-Reflector set for using natural light to study the slide. **Objective:** Achromatic 10x and 40x. **Packaging :** In mould styrofoam box or wooden storing cabinet with lock and key (on demand) **Packaging:** Inner Thermocol/Styrofoam Packing and Outer Cardboard Box.

# COMPOUND STUDENT MICROSCOPE BM-3





This microscope have well designed heavy and sturdy pressure die casted monocular body inclinable to 90° to meet the requirements of School and college students

**Eye Piece:** Wide-Field 10X Eye-piece or set of 10x & 15x Huygenian Eye-pieces.

**Nosepiece:** Triple revolving nosepiece with click stops.

**Stage:** High quality S.S. Stage clips provided to hold the slide.

**Focussing:** By vertical movement of the observation tube, with coarse adjustment using rack-pinion movement and fine motion by screw level mechanism.

**Condenser:** Abbe condenser having numerical aperture of 1.25 with iris diaphragm and swing out filter holder can be moved through rack and pinion. This condenser unit incorporates high efficiency optical system for optimum utilisation of light.

**Illumination:** Arc-Reflector set for using natural light to study the slide.

**Objective:** Achromatic 10x and 45x.

**Packaging:** Inner Thermocol/Styrofoam Packing and Outer Cardboard Box.

# COMPOUND STUDENT MICROSCOPE BM-4





This microscope have well designed heavy and sturdy pressure die casted monocular body inclinable to 90° to meet the requirements of School and college students

**Eye Piece:** Wide-Field 10x Eye-piece or set of 10x & 15x Huygenian Eye-pieces.

**Nosepiece:** Triple revolving nosepiece with click stops.

**Stage:** High quality S.S. Stage clips provided to hold the slide.

**Focussing:** By vertical movement of the observation tube, with coarse adjustment using rack-pinion movement and fine motion by screw level mechanism.

**Condenser:** Abbe condenser having Numerical aperture of 1.25 with iris diaphragm and swing out filter holder can be moved through rack and pinion. This condenser unit incorporates high efficiency optical system for optimum utilisation of light.

**Illumination:** Arc-Reflector set for using natural light to study the slide.

**Objective:** Achromatic 10x and 40/45x.

**Packaging:** Inner Thermocol/Styrofoam Packing and Outer Cardboard Box.

# COMPOUND STUDENT MICROSCOPE BM-3A





# LABORATORY MICROSCOPES

We are a leading laboratory microscopes manufacturer, dedicated to providing cutting-edge optical solutions for scientific research and analysis. With a commitment to precision and innovation, our company offers a diverse range of high-quality microscopes tailored to meet the specific needs of various scientific disciplines. Our products are engineered with advanced features and state-of-the-art technology, ensuring exceptional imaging capabilities and accurate results. We prioritize the highest standards of manufacturing, incorporating rigorous quality control processes to deliver reliable and durable microscopes that empower scientists and researchers worldwide. With our expertise and passion for scientific advancement, we are your trusted partner in the pursuit of knowledge and discovery.



ISI Marked Medical Microscope has a well designed heavy and sturdy die casted monocular body inclinable to 90° to meet the needs of school and college students

> Observation tube with mechanical tube length 160mm with triple nose piece. > Separate coarse and fine motion. > Fixed Co-axial horizontal graduated mechanical stage 120mm x 120mm with convenient adjustment for slide movement. > Double lens bright field abbe condenser NA 1.25 is fixed below the stage with iris diaphragm and swing out filter holder , can be moved through rack-pinion. > Adjustable down stopper for preventing accidental damages to slide > Illumination by piano concave mirror

Also available without ISI mark

**Packaging:** Inner Thermocol/Styrofoam Packing and Outer Cardboard Box.

# MEDICAL MICROSCOPE BM-5





## Pathological Monocular Microscope

- > One 10x Wide Field Eye -piece.
- > 4 nos. Objectives, Parafoal Achromatic, 4x, 10x, 40x SL and 100x SL Oil immersion.
- > Stage : Horizontal Mechanical of size 120 X 125mm min.
- > Focussing : Separate coarse and fine focussing.
- > Illumination : LED Light with on/off switch, light intensity regulator and Plano concave mirror attachment suitable for 220V, 50 Hz. AC supply.

**Also available without ISI mark**

**Packaging:** Inner Thermocol/Styrofoam Packing and Outer Cardboard Box.

# PATHOLOGICAL MONOCULAR MICROSCOPE BM-6mo





## Pathological Binocular Microscope

- > Two 10x Wide Field Eye -piece.
- > 4 nos. Objectives, Parafoal Achromatic, 4x, 10x, 40x SL and 100x SL Oil immersion.
- > Stage : Horizontal Mechanical of size 120 X 125mm min.
- > Illumination : LED Light with on/off switch, light intensity regulator and Plano concave mirror attachment suitable for 220V, 50 Hz. AC supply.
- > Eye Pieces for Binocular Microscope confirm to IS : 8275:1976

Also available without ISI mark

**Packaging:** Inner Thermocol/Styrofoam Packing and Outer Cardboard Box.

# PATHOLOGICAL BINOCULAR MICROSCOPE BM-6bi



**BM-6TR**





## Pathological Monocular Microscope

- > One 10x Wide Field Eye -piece.
- > 4 nos. Objectives, Parafoal Achromatic, 4x, 10x, 40x SL and 100x SL Oil immersion.
- > Stage : Co-axial Horizontal Mechanical of size 120 X 125mm min.
- > Focussing : Co-axial coarse and fine focussing.
- > Illumination : LED Light with on/off switch, light intensity regulator and Plano concave mirror attachment suitable for 220V, 50 Hz. AC supply.

Also available without ISI mark

**Packaging:** Inner Thermocol/Styrofoam Packing and Outer Cardboard Box.

# PATHOLOGICAL MONOCULAR BM-8mo





## Pathological Binocular Microscope

- > Two 10x Wide Field Eye -piece.
- > 4 nos. Objectives, Parafoal Semi-Plan Achromatic, 4x, 10x, 40x SL and 100x SL Oil immersion.
- > Stage : Horizontal Mechanical of size 120 X 125mm min.
- > Illumination : LED Light with on/off switch, light intensity regulator and Plano concave mirror attachment suitable for 220V, 50 Hz. AC supply.
- > Eye Pieces for Binocular Microscope with coaxial focussing control confirm to IS : 8275:1976

Also available without ISI mark

**Packaging:** Inner Thermocol/Styrofoam Packing and Outer Cardboard Box.

# PATHOLOGICAL BINOCULAR MICROSCOPE BM-8bi



**BM-8TR**





- > Ergonomic Design
- > Exceptional Precision
- > Accurate Measurements
- > Highest Industry Standard
- > Outstanding Optical Performance

The BM-9bi reflects friendly design suitable for both the classroom and laboratory environment. Embodied with sturdy C-shaped aluminum alloy die-cast stand, high quality optics and optical coatings, and brass gears, all of which compose the BM-9bi to resist the toughest of user environments.

> Binocular Head having Hard coated prisms > Quadruple revolving Ball Bearing Nose piece > Co-axial Focussing system > Double layered mechanical stage with low positioned coaxial knobs > Bright LED Light with Solid state power supply circuitry. > Semi-Plan Achromatic objectives, Extra Wide Field Eye Piece (Hard Coated) along with high quality condenser lens for better results for all magnifications.  
**Objectives:** 4x, 10x, 40x, 100x (oil) **Eye pieces :** EWF 10x (18mm Paired) **Also available without ISI mark**

**Packaging:** Inner Thermocol/Styrofoam Packing and Outer Cardboard Box.

# BiNOCULAR MICROSCOPE BM-9bi

- TRINO
- BINO
- 360°
- LED
- TL
- ABBE
- V
- 230
- DAY



**BM-9TR**



# ULTRA MICROSCOPES

# SERIES

We are a leading laboratory microscopes manufacturer, dedicated to providing cutting-edge optical solutions for scientific research and analysis. With a commitment to precision and innovation, our company offers a diverse range of high-quality microscopes tailored to meet the specific needs of various scientific disciplines. Our products are engineered with advanced features and state-of-the-art technology, ensuring exceptional imaging capabilities and accurate results. We prioritize the highest standards of manufacturing, incorporating rigorous quality control processes to deliver reliable and durable microscopes that empower scientists and researchers worldwide. With our expertise and passion for scientific advancement, we are your trusted partner in the pursuit of knowledge and discovery.



# *ultra* Series

**Eyepiece:** Extra wide field 10x Eye-piece specially designed for ultra series. **Nosepiece:** Triplet revolving nosepiece with click stops. **Stage:** High quality S.S. Stage clips provided to hold the slide. **Focusing:** By vertical movement of the Observation tube, with coarse adjustment using rack-pinion movement and, fine motion by screw lever mechanism. **Condenser:** Abbe condenser having Numerical aperture of 1.25 with iris Diaphragm and swing out filter holder. This condenser unit incorporates high efficiency optical system for optimum utilization of light.

**Light Source:** Battery operated LED pin-type Lamp with on and off switch and an optional arc-reflector set for using natural light to study the slide.

**Objective:** Achromatic 10x and 40x.

**Packaging:** Inner Thermocol/Styrofoam Packing and Outer Cardboard Box.

## MONOCULAR STUDENT MICROSCOPE BM-3 *ultra*





# *ultra* Series

**Eyepiece:** Extra wide field 10x Eye-piece specially designed for ultra series. **Nosepiece:** Triplet revolving nosepiece with click stops. **Stage:** High quality S.S. Stage clips provided to hold the slide. **Focusing:** By vertical movement of the Observation tube, with coarse adjustment using rack-pinion movement and, fine motion by screw lever mechanism. **Condenser:** Abbe condenser having Numerical aperture of 1.25 with iris Diaphragm and swing out filter holder can be moved through rack-pinion. This condenser unit incorporates high efficiency optical system for optimum utilization of light.

**Light Source:** Battery operated LED pin-type Lamp with on and off switch and an optional arc-reflector set for using natural light to study the slide.

**Objective:** Achromatic 10x and 40x.

**Packaging:** Inner Thermocol/Styrofoam Packing and Outer Cardboard Box.

## JUNIOR MEDICAL MICROSCOPE BM-4 *ultra*



MONO



LED



TL



ABBE



BATT



2 DAY





# *ultra* Series

**Eyepiece:** Extra wide field 10x Eye-piece specially designed for ultra series.

**Nosepiece:** Triplet revolving nosepiece with click stops.

**Stage:** Built in graduated co-axial mechanical stage having size of 135 mm x 120 mm, which is controlled two separate knobs for easy scan of slide.

**Focusing:** By vertical movement of the Observation tube, with coarse adjustment using rack-pinion movement and, fine motion by screw lever mechanism having graduated knob.

**Condenser:** Abbe condenser having Numerical aperture of 1.25 with iris Diaphragm and swing out filter holder can be moved through rack-pinion. This condenser unit incorporates high efficiency optical system for optimum utilization of light.

**Light Source:** Battery operated LED pin-type Lamp with on and off switch and an optional arc-reflector set for using natural light to study the slide.

**Objective:** Achromatic 10x and 40x and 100x (Oil immersion).

**Packaging:** Inner Thermocol/Styrofoam Packing and Outer Cardboard Box.

# MEDICAL MICROSCOPE BM-5

*ultra*



MONO



LED



TL



ABBE



BATT



2 DAY





# *ultra* Series

- > All New Design
- > Monocular Head having hard coated prisms
- > Quadruple revolving Ball Bearing Nose piece
- > Separate Coarse and Fine Focussing system
- > Double layered mechanical stage with low positioned coaxial knobs
- > Bright LED Light with Solid state power supply circuitry.
- > Plan Achromatic objectives, Extra Wide Field Eye Piece (Hard Coated) along with high quality condenser lens for better results for all magnifications.

**Objectives :** 4x, 10x, 40x, 1 00x (oil)

**Eye pieces:** EWF 10x (18mm Paired)

**Packaging:** Inner Thermocol/Styrofoam Packing and Outer Cardboard Box.

## MONOCULAR MICROSCOPE BM-6mo *ultra*





# ultra Series

- > Monocular Head having Hard coated prisms
- > Quadruple revolving Ball Bearing Nose piece
- > Co-axial Focussing system
- > Double layered mechanical stage with low positioned coaxial knobs
- > Bright LED Light with Solid state power supply circuitry.
- > Plan Achromatic objectives, Extra Wide Field Eye Piece {Hard Coated} along with high quality condenser lens for better results for all magnifications.

**Objectives:** 4x, 10x, 40x, 100x (oil)

**Eye pieces :** EWF 10x (18mm Paired)

**Packaging:** Inner Thermocol/Styrofoam Packing and Outer Cardboard Box.

**Optional Packaging:**

- 1) Wooden Box outer cabinet with lock and key (Chargeable).



## MONOCULAR MICROSCOPE BM-8mo *ultra*





# RESEARCH BINOCULAR MICROSCOPE

## BM-6bi

*ultra*

- > Ergonomic Design
- > Exceptional Precision
- > Accurate Measurements
- > Highest Industry Standard
- > Outstanding Optical Performance

> All New Design > Binocular Head having Hard coated prisms > Quadruple revolving Ball Bearing Nose piece > Double layered and Fine Focussing system > Special graduated mechanical stage with low positioned coaxial knobs > Bright LED Light with Solid state power supply circuitry. > Plan Achromatic objectives, Extra Wide Field Eye Piece (Hard Coated) along with high quality condenser lens for better results for all magnifications.

**Objectives:** 4x, 10x, 40x, 100x (oil)

**Eye pieces :** EWF 10x (18mm Paired)

**Packaging:** Inner Thermocol/Styrofoam Packing and Outer Cardboard Box.

**Optional Packaging:**

1) Wooden Box outer cabinet with lock and key (Chargeable).



**BM-6TR ULTRA**



# ultra Series

- > Binocular Head having Hard coated prisms
- > Quadruple revolving Ball Bearing Nose piece
- > Co-axial Focussing system
- > Double layered mechanical stage with low positioned coaxial knobs
- > Bright LED Light with Solid state power supply circuitry.
- > Plan Achromatic objectives, Extra Wide Field Eye Piece {Hard Coated} along with high quality condenser lens for better results for all magnifications.

**Objectives:** 4x, 10x, 40x, 100x (oil)

**Eye pieces :** EWF 10x (18mm Paired)

**Packaging:** Inner Thermocol/Styrofoam Packing and Outer Cardboard Box.



**BM-8TR ULTRA**

# BiNOCULAR MICROSCOPE BM-8bi

*ultra*





# XL SERIES MICROSCOPES

As a premier manufacturer of high-quality laboratory microscopes, we pride ourselves on delivering exceptional precision and performance. Our advanced XL Series Microscopes are engineered with utmost care and attention to detail.

With cutting-edge technology and rigorous quality control, our microscopes ensure accurate and reliable results, empowering scientists and researchers in their quest for discovery. Trust us for uncompromising quality and unparalleled imaging capabilities.



The excellent appearance  
in accord with ergonomic design

Integrated body design  
makes products maintains  
long-term stability.

High quality 3W LED lamp  
and long usage life.

**Head:** Binocular Head, Inclined at 30°, 360° Rotatable,  
Interpupillary Distance 54-75 mm, Diopter Adjustable  
± 5 On Left Tube

**Eyepiece:** Wide Field Eyepiece WF 10X/1 8mm

**Objective :** Plan Achromatic Objectives 4x, 10x, 40xs, 100xs(oil)

**Viewing Head :** Articulated Free Trinocular Head, 30°inclined,  
Interpupillary Distance 54-75mm

**Nosepiece :** Reverse Quadruple Nosepiece (inward facing)

**Focusing System :** Coaxial Coarse and Fine Adjustments, Fine  
Division 0.002mm, Coarse Stroke 36mm Supplied With An  
Adjustable Rack Stop To Prevent Damage To Sample And  
Objectives, The Coarse Adjustment Are Equipped With Friction  
Control

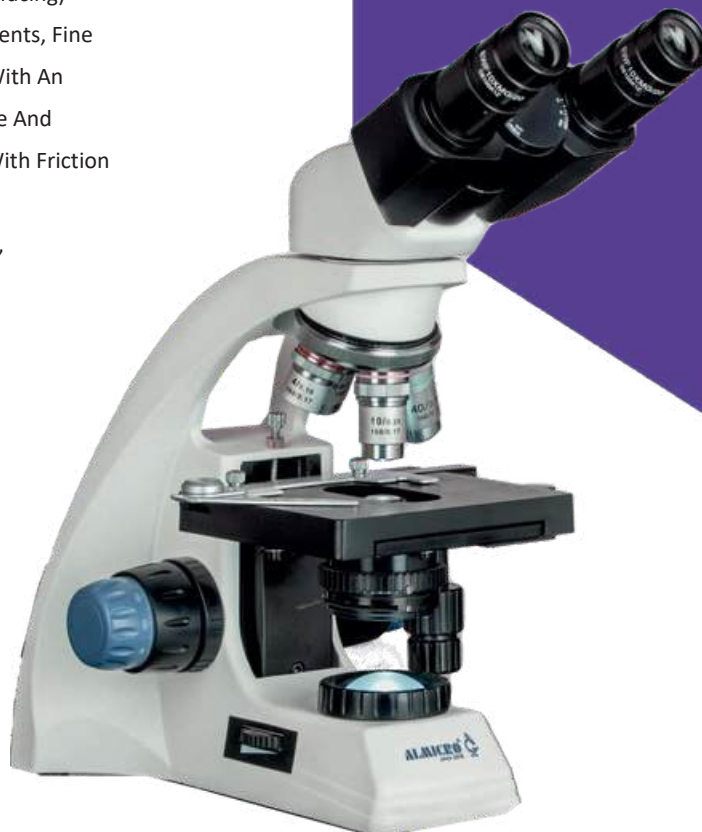
**Stage:** Double Layer Mechanical Stage 110x125mm,  
Moving Range 30x75mm

**Illumination :** 3W LED, Brightness

Adjustable, Powered by 110-240V Adapter

Inbuilt Battery Backup Facility

**Packaging:** Inner Thermocol/Styrofoam  
Packing and Outer Cardboard Box.



# RESEARCH BINOCULAR MICROSCOPE AXL-Bino



BINO



360°



LED



TL



ABBE



BATT



230 V



DAY

2



The excellent appearance  
in accord with ergonomic design

Integrated body design  
makes products maintains  
long-term stability.

High quality 3W LED lamp  
and long usage life.

**Head:** Trinocular Head, Inclined at 30°, 360° Rotatable,  
Interpupillary Distance 54-75 mm, Diopter Adjustable  
± 5 On Left Tube

**Eyepiece:** Wide Field Eyepiece WF 10X/1 8mm

**Objective :** Plan Achromatic Objectives 4X, 10x, 40xs,  
100xs(oil)

**Viewing Head :** Articulated Free Trinocular Head,  
30°inclined, Interpupillary Distance 54-75mm

**Nosepiece :** Reverse Quadruple Nosepiece (inward  
facing)

**Focusing System :** Coaxial Coarse and Fine Adjustments,  
Fine Division 0.002mm, Coarse Stroke 36mm Supplied  
With An Adjustable Rack Stop To Prevent Damage To  
Sample And Objectives, The Coarse Adjustment Are  
Equipped With Friction Control

**Stage:** Double Layer Mechanical Stage 110x125mm, Moving  
Range 30X75mm

**Illumination :** 3W LED, Brightness Adjustable, Powered By  
110-240V Adapter

**Adapter:** Eyepiece Tube Adapter

Inbuilt Battery Backup Facility

**Packaging:** Inner Thermocol/Styrofoam Packing and  
Outer Cardboard Box.

# RESEARCH TRINOCULAR MICROSCOPE AXL-Trino



TRINO



360°



LED



TL



ABBE



BATT



230 V



DAY

2





The excellent appearance  
in accord with ergonomic design

Integrated body design  
makes products maintains  
long-term stability.

High quality 3W LED lamp  
and long usage life.

**Head:** Binocular Head, Sidentoph at 30°, 360° Rotatable, Interpupillary Distance 50-75 mm, Diopter Adjustable  $\pm 5$  On Left Tube **Eyeiece:** Wide Field Eyepiece WF 10X/20mm **Objective :** SP Plan Achromatic Objectives 4x, 10x, 40x, 100x(oil) **Viewing Head :** Articulated Free Trinocular Head, 30°inclined, Interpupillary Distance 50-75mm **Nosepiece :** Reverse Quadruple Nosepiece (inward facing) **Focusing System :** Coaxial Coarse and Fine Adjustments, Fine Division 0.002mm, Coarse Stroke 37.7mm Supplied With An Adjustable Rack Stop To Prevent Damage To Sample And Objectives, The Coarse Adjustment Are Equipped With Friction Control **Stage:** Double Layer Mechanical Stage 140x140mm, Moving Range 50x75mm **Illumination :** 3W LED, Brightness Adjustable, Powered by 110-240V Adapter

**Packaging:** Inner Thermocol/Styrofoam Packing and Outer Cardboard Box.

# RESEARCH BINOCULAR MICROSCOPE FXL-Bino





The excellent appearance  
in accord with ergonomic design

Integrated body design  
makes products maintains  
long-term stability.

High quality 3W LED lamp  
and long usage life.

**Head:** Trinocular Head, Sidentoph at 30°, 360° Rotatable, Interpupillary Distance 50-75 mm, Diopter Adjustable  $\pm 5$  On Left Tube **Eyepiece:** Wide Field Eyepiece WF 10X/20mm **Objective :** SP Plan Achromatic Objectives 4x, 10x, 40x, 100x(oil) **Viewing Head :** Articulated Free Trinocular Head, 30°inclined, Interpupillary Distance 50-75mm **Nosepiece :** Reverse Quadruple Nosepiece (inward facing) **Focusing System :** Coaxial Coarse and Fine Adjustments, Fine Division 0.002mm, Coarse Stroke 37.7mm Supplied With An Adjustable Rack Stop To Prevent Damage To Sample And Objectives, The Coarse Adjustment Are Equipped With Friction Control **Stage:** Double Layer Mechanical Stage 140x140mm, Moving Range 50x75mm **Illumination :** 3W LED, Brightness Adjustable, Powered by 110-240V Adapter

**Packaging:** Inner Thermocol/Styrofoam Packing and Outer Cardboard Box.

# RESEARCH TRINOCULAR MICROSCOPE FXL-Trino



TRINO



360°



LED



TL



ABBE



230 V



2 DAY





The excellent appearance  
in accord with ergonomic design

Integrated body design  
makes products maintains  
long-term stability.

High quality 3W LED lamp  
and long usage life.

**Optical System** : Finite Optical System

**Eyeiece**: PL 1 0X/23mm High Eyepiont Eyepiece,  
Diopter Adjustment  $\pm 5$

**Objective** : 45mm DIN Infinity Corrected Plan  
Achromatic Objective: 4X, 10X, 40X(S), 100X(S,Oil)

**Viewing Head** : Articulated Free Binocular Head,  
30°inclined, Interpupillary Distance 50-75mm

**Nosepiece** : Backward Quintuple or Quadruple  
Objective Nosepiece

**Stage** : 220X148mm X-axis Low Hand Position Double  
Mechanical Stage(steel wire transmission) ,  
76X50mm,Presion 0.1 mm , Damped Double Slide  
Clamp

**Condenser** : Height Adjustable Abbe Condenser Set

**Focusing System** : Coaxial Coarse and Fine Focus  
Knobs, Precision 0.002mm

**Illumination** : 3W LED Lamp with Kohler Illumination  
System

#### Optional

1. Insert Phase Contrast Apparatus
2. Dry Darkfield Condenser, Oil-darkfiled Condenser
3. Polarizing Device
4. Plan Objective Set, Infinity Plan Achromatic Objective Set

**Packaging**: Inner Thermocol/Styrofoam Packing and  
Outer Cardboard Box.

# RESEARCH BINOCULAR MICROSCOPE VXL-BINO





The excellent appearance  
in accord with ergonomic design

Integrated body design  
makes products maintains  
long-term stability.

High quality 3W LED lamp  
and long usage life.

**Optical System** : Finite Optical System

**Eyepiece**: PL 10x/23mm High Eyepoint Eyepiece, Diopter  
Adjustment  $\pm 5$

**Objective** : 45mm DIN Infinity Color Corrected Plan  
Achromatic Objective: 4X, 10X, 40X(S), 100X(S,Oil)

**Viewing Head** : Articulated Free Trinocular Head,  
30°inclined, Interpupillary Distance 50-75mm

**Nosepiece** : Backward Quintuple or Quadruple  
Objective Nosepiece

**Stage** : 220 x 148mm X-axis Low Hand Position Double  
Mechanical Stage(steel wire transmission), 76 x 50mm,  
Presion 0.1 mm , Damped Double Slide Clamp

**Condenser** : Height Adjustable Abbe Condenser Set

**Focussing System** : Coaxial Coarse and Fine Focus  
Knobs, Precision 0.002mm

**Illumination** : 3W LED Lamp with Kohler illumination  
System

#### Optional

1. Insert Phase Contrast Apparatus
2. Dry Darkfield Condenser, Oil-darkfiled Condenser
3. Polarizing Device
4. Plan Objective Set, Infinity Plan Achromatic Objective Set

**Packaging**: Inner Thermocol/Styrofoam Packing and  
Outer Cardboard Box.

# RESEARCH TRINOCULAR MICROSCOPE VXL-TRINO





# RESEARCH TRINOCULAR MICROSCOPE BLXL-Plus

BLXL-Plus is designed keeping user comfort in mind. Conveniently placed controls for fast and efficient observations. With multi layer coating on our objectives having FOV upto 26.5mm, reduce chromatic aberration to low levels, resulting bright and high contrast images even for low light applications like Fluorescence dark field etc. With quintuple nose piece user have choice for extra objectives and multiple illumination techniques. Features adding to user comforts are Light preset switch; Light intensity LED indicator, Built-in filters and many more.

**Optical system** Universal Infinite optical system, color corrected plan

achromatic optics 4x,10x,20x,40x & 100x oil immersion

**Koehler's** S-LED, Koehler illumination, LED intensity Controller,

**Illumination** Eco-energy saving auto cut off, fly eye lens, built-in filters

**Viewing Head** Inclined, Two/Three position ergo head

**Nosepiece** Quintuple nosepiece with slots for POL / DIC

**Eyepiece** Super wide field 23mm

**Mechanical Stage** Double Layer, Rackless Ceramic Hard Coated, Stage Lock, Double Slide Holder

**Condenser** Swing-out abbe, universal Five/Six position

**Focusing** 3/2 step focusing

**DIC** Slot for holding DIC plate and prism

**Teaching Head** Upto 22 person multi viewing attachment

**Filters** Built-in ND Filters

**Packaging:** Inner Thermocol/Styrofoam Packing and Outer Cardboard Box.

### Optional Packaging:

1) Wooden Box outer cabinet with lock and key (Chargeable).



2



# FLUORESCENT MICROSCOPES

As a premier manufacturer of high-quality laboratory microscopes, we pride ourselves on delivering exceptional precision and performance. Our specialized fluorescence microscopes are engineered with utmost care and attention to detail. A fluorescence microscope is a type of optical microscope that uses fluorescence to illuminate samples. It can detect and visualize fluorescent signals, fluorescently labeled molecules, and cells with fluorescently labeled structures. This technique is widely used in biology, medicine, and materials science.



The excellent appearance  
in accord with ergonomic design

Integrated body design  
makes products maintains  
long-term stability.

High quality 3W LED lamp  
and long usage life.

**Optical Systems:** Plan achromatic optics, antifungal & antireflection Coated

**Magnification:** 4x, 10x, 40x, 100x (40x to 100x), (60x and 80x optional)

**Observation Head:** Sidetoph Trinocula/Binocular head inclined at 30 deg., Swivelling 360 deg. rotatable. with Interpupillary distance of 48-75mm. Three Way trinocular tube with simultaneous view on camera and eye piece.

**Nose-Piece:** Quadruple Nose Piece.

**Eyepiece:** Wide Field 10x eye-piece with 25mm/25mm F.O.V (Anti-Fungal) with rubber eyecups.

**Mechanical Stage:** 210mm X 140mm and X/Y travel range 90mm x 70mm with upper limit stopper, hard ceramic surface dual slide holder.

**Division:** 0.1m Low drive right side movement

**Objective:**

– Plan-achromat/HI PLAN/ 4X NA 0.10 – Plan-achromat/HI PLAN/ 10X NA 0.25  
Plan-achromat/HI PLAN/ 40X NA 0.65 – Plan-achromat/HI PLAN/ 100X NA 1.3

**Condenser:** Swing out condenser/Universal condenser for adaptation of switchable condenser heads, NA 0.90 suitable for bright field, phase contrast, and fluorescent. Iris diaphragm with frosted white filter, antifungal & anti-reflection coated. Rack and pinion movements on stainless steel guides

**Focussing Control:** Two step Co-axial coarse and fine focussing on both sides, gear systems for smooth operation. Fine Adjustment

**Transmitted illumination:** 10W LED illumination, variable control, Up to 60,000 hours of LED life. Universal input 110V-240V AC, 50/60Hz (with battery backup-optional)

**Filters:** Single Immuno Fluorescence.

**Fluorescent illumination:** Fluorescence imaging function: LED base illumination with LED Light(s) time of 60,000 hours with intensity controller.

# FLUORESCENT MICROSCOPE AFM-50





- > Excellent fluorescent image with high resolution fluorescent objectives
- > Protect the light leak with advanced lamp housing
- > Excellent Optical Function with Infinite Optical System
- > Innovative Stand structure, Sharp Image Display,
- > Convenient and Special for Viewing Incubating Cell Tissue
- > Widely used in venereal disease examination and immuneless diagnosis

**VIEWING HEAD**

Compensation free Trinocular Head inclined at 30°  
Interpupillary Distance : 48-75 mm

**EYEPIECE (OCULAR)**

High point , Extra wide field eyepiece EW10X/20mm

**NOSEPIECE** : Inverse Quadruple Nosepiece

**OBJECTIVES**

Long working distance Infinite Plan Achromatic objective  
4x/0.1, 10x/0.25, 20x/0.65, 40X/1.25

**CONDENSOR**: N.A. I .25 rack and Pinion Adjustable

**CENTERING TELESCOPE**: Centering telescope 30MM

**STAGE** : Double layer mechanical  
(Size:21 0mmXl 40mm, Move range: 75mmX50mm)

**FOCUS SYSTEM**

Coaxial coarse & fine focusing adjustment with tensional adjustable and up stop minimum division of fine focusing: 2µm.

**LIGHT SOURCE FILTER**: Halogen bulb 6V/20W

**FILTER** : Blue, and frosted glass Filters

**REFLECTED FLUORESCENCE SYSTEM**

Mercury Lamp House 100W/DC Power Supply: AV 220V

Fluorescence Filter System B

exciton wavelength : 420~485nm

Fluorescence Filter System G

exciton wavelength : 460~550nm

Fluorescence Filter System UV

exciton wavelength : 330~400nm

**FLUORESCENT ATTACHMENT SPECIFICATIONS**

**Reflected Light Source**

Blue, Green Exciting Light Filter System and Ordinary Light System

**Illumination**

100W HBO Ultra Hi-voltage Spherical Mercury Lamp

**Centering Telescope**: 30MM

**Protection Barrier Power Supply**

Barrier to Resist the Ultraviolet Light

**Fluorescent Objective**

4x, 10x, 40x (S), 1 00x (S, Oil)

**Immersion Oil**

Fluorescence Free Oil

# FLUORESCENT MICROSCOPE

## AFM-100





## PHASE CONTRAST ATTACHMENT

This attachment is useful for viewing the detailed structures of unstained or living contrast equipment to convert equipment to convert small differences in thickness and Refractive index of the specimen into differences in brightness.

The set consist of phase turret Condenser N.A. 1.25 with iris diaphragm.

Phase achromatic objectives, 45mm par focal distance 10x (N.A. 0.025) 20x (N.A. 0.40) , 40x (0.65) Spring loaded, 100x (N.A. 1.25 ) Spring loaded, Oil immersion Phase centering telescope, Green filter & Turret condenser key.



## DARK FIELD CONDENSER ATTACHMENT

Dark Field Condenser System is used to observe transparent object. Most plankton are so transparent that they are difficult to see even with bottom lighting. Dark ground illumination (Condenser) is a special kind of lighting used to make them show up better. Dark field condenser stops light coming from directly under the object and only lets it come up from the sides. Only light which reflects off the objects goes into the objective lens. The plankton shows up as bright objects on a drawback ground.

It comprises suitable immersion type dark field condenser with centering screws N.A. 1.20-1.33 & Achromatic objective 100x (SL) oil immersion with iris diaphragm for use dark field as well as on bright field.



# PHASE CONTRAST & DARK FIELD ATTACHMENTS



# INVERTED TISSUE CULTURE MICROSCOPES

We specialize in crafting high-quality inverted tissue microscopes that cater to the specific needs of researchers in the field of tissue analysis. Our exceptional inverted tissue microscopes combine advanced optics with ergonomic design for precise and comfortable imaging.

With uncompromising quality and superior imaging capabilities, our microscopes enable detailed examination and analysis of tissue samples, empowering scientists to unlock new insights in the realm of cellular research.



# INVERTED TISSUE CULTURE TM-8/8A

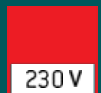
ALMICRO Inverted Tissue Culture Microscope is used for tissue culture examination. This Microscope has coarse and fine adjustment, incident LED Light with variable light control arrangement.

It comes equipped with long working distance objectives and binocular head, complete with following optics in box :

**LWD Objectives:** 5x, 10x, 20x, 40x

**Wide Field Eye pieces:** 10x (Paired)

**Packaging:** Inner Thermocol/Styrofoam Packing and Outer Cardboard Box.



TM-8A



> High quality inverted biological microscope, having trinocular head, phase-contrast, ideal for lab > With Infinite optical system, providing excellent optical quality and making image perfect. > Creative body structure, sharp specimen image, convenient operation, specially designed for cell culture observing > Long working distance and Infinite Plan Objective, make visual field of specimen flatter, brighter, better contrast, and even more easy to observe the living cell's state > Standard Phase Contrast Annular Spot, center adjustable, enable observe low contrast or transparent specimen to get a sharp image

**Packaging:** Inner Thermocol/Styrofoam Packing and Outer Cardboard Box.

**VIEWING HEAD:** Compensation free Binocular/ Trinocular Head inclined at 30°, 360°, Rotatable Interpupillary Distance: 48-75 mm

**EYEPIECE (OCULAR):**

High point, Extra wide field eyepiece EW10X/22mm

**NOSEPIECE:**

Inverse Quintuple Nosepiece

**OBJECTIVES:**

Long working distance Infinite Plan Achromatic objective (4x/0.1, WD 18mm), (10x/0.25, WD 10mm), (20x/0.4, WD 5.1 mm), (40x/0.6, WD 2.6mm- cover slip 1.2mm)  
Infinite Plan Phase Objective : PH 10x/0.25, WD 10mm PH 20x/0.4, WD 5.1 mm PH 40x/0.6, WD 0.35 (cover slip 1.2mm) mm

**CONDENSOR:**

Super long working distance condenser NA0.3, LWD72mm;  
If unload the condenser, the culture dish height could be 150mm

**CENTERING TELESCOPE:** Centering telescope 030MM

**STAGE:** Plane stage 160x250mm

**PHASE CONTRAST SLIDING PLATE**

10X, 20X-.40X center adjustable  
Phase Contrast sliding plate

**FOCUS SYSTEM**

Coaxial coarse & fine focusing adjustment with rack and pinion mechanism Fine focusing scale Value 0.002mm

**LIGHT SOURCE FILTER:**

Halogen bulb 6V/30W

**FILTER :**

Blue, green, yellow and frosted glass

# INVERTED TISSUE CULTURE TM-9



V





# STEREO ZOOM MICROSCOPES

As a renowned manufacturer of high-quality stereo zoom microscopes, we are committed to providing researchers and professionals with exceptional optical instruments for precise observation and analysis. Our innovative products offer superior zooming capabilities, crystal-clear imaging, and ergonomic design for comfortable usage.

With our commitment to excellence and advanced technology, our stereo zoom microscopes deliver unparalleled performance and reliability, making them indispensable tools in various fields of research and industry.



The excellent appearance  
in accord with ergonomic design

Integrated body design  
makes products maintains  
long-term stability.

High quality 3W LED lamp  
and long usage life.

Student stereo Microscope has been designed for  
Dissection / Inspection of specimens in Biology. Precisely  
designed long working distance objectives & wide field  
eyepieces produce an extremely large, brilliant & bright  
images. It is light in weight having sturdy base, stage with  
clips and reversible black & white plate. straight Binocular  
Head with interpupillary adjustment & Hand grip on stand  
for safe handling.

Fixed Achromatic Objectives 2x or 3x & widefield eyepieces WF 10x or  
WF 15x (paired) are available on pillar stand with dioptic correction &  
trans illumination base as optional.

**Packaging:** Inner Thermocol/Styrofoam Packing and Outer  
Cardboard Box.

# STUDENT STEREO MICROSCOPE DS-22





# STEREO MICROSCOPE DS-50

The excellent appearance  
in accord with ergonomic design

Integrated body design  
makes products maintains  
long-term stability.

High quality 3W LED lamp  
and long usage life.

> Binocular Head Inclined at 45°, Interpupillary 55-75mm > Wide  
Field Eyepiece EW 10x & 18x > Objective - 2x/4x or 1x/3x > Working  
Distance 100mm > Stage 95mm, > 1 Pc Frosted Glass Stage (For  
Bottom Illumination) > 1 Pc Plastic Black/White Plate (For Top  
Illumination) > Illumination Transmit & Reflected

**Packaging:** Inner Thermocol/Styrofoam  
Packing and **Outer** Cardboard Box.





Binocular Zoom Stereo Microscope adopts streamline integrated mechanical design. Easy operation, long working distance, clear resolved image, enclosure integrated. It can be extensively used for observation studies in medical and health, farming and forestry, biology and botany, as well as for inspection, assembling and repair of tiny precision parts in electronics and precision machine industries.

**Specifications:**

**Viewing tube:** Binocular, tube inclined at 45°, rotated at 360°, adjustable inter papillary distance (55-75mm), the left and right tubes have diopter adjustment

**Eyepiece:** WF10X

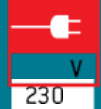
**Objective:** Zoom ratio 6.4:1, zooming range 0.7X to 4.5X

**Main body:** Column type

**Top and bottom illumination:** Reflected and transmitted halogen lamp, 6V/15W

**Packaging:** Inner Thermocol/Styrofoam Packing and Outer Cardboard Box.

# STEREO ZOOM MICROSCOPE DSZ -7 7





Trinocular Zoom Stereo Microscope adopts streamline integrated mechanical design. Easy operation, long working distance, clear resolved image, enclosure integrated. It can be extensively used for observation studies in medical and health, farming and forestry, biology and botany, as well as for inspection, assembling and repair of tiny precision parts in electronics and precision machine industries.

**Specifications:**

**Viewing tube:** Binocular, tube inclined at 45°, rotated at 360°, adjustable inter papillary distance (55-75mm), the left and right tubes have diopter adjustment

**Eyepiece:** WF10X

**Objective:** Zoom ratio 6.4:1, zooming range 0.7X to 4.5X

**Main body:** Column type

**Top and bottom illumination:** Reflected and transmitted halogen lamp, 6V/15W

**Packaging:** Inner Thermocol/Styrofoam Packing and Outer Cardboard Box.

# STEREO ZOOM MICROSCOPE DSZ-88





Trinocular Gemological Microscope adopts streamline integrated mechanical design. Easy operation, long working distance, clear resolved image, enclosure integrated. It can be extensively used for observation studies of Gems and Stones.

**Specifications:**

- Superior Japanese (Hoyo or other) optics
- 20X-80X zoom stereo head
- True darkfield illumination halogen lamp 12V 10W
- Adjustable iris diaphragm
- Gem clip
- Eye piece : 10/20x
- Internationally adaptable voltage 120V/240V
- 360 degrees rotating head
- Dist cover, One year mechanical and electrical warranty

# GEMOLOGICAL MICROSCOPE

## GM-01



TRINO



IL



HAL



ZOOM



230 V



2 DAY





# POLARIZING MICROSCOPES

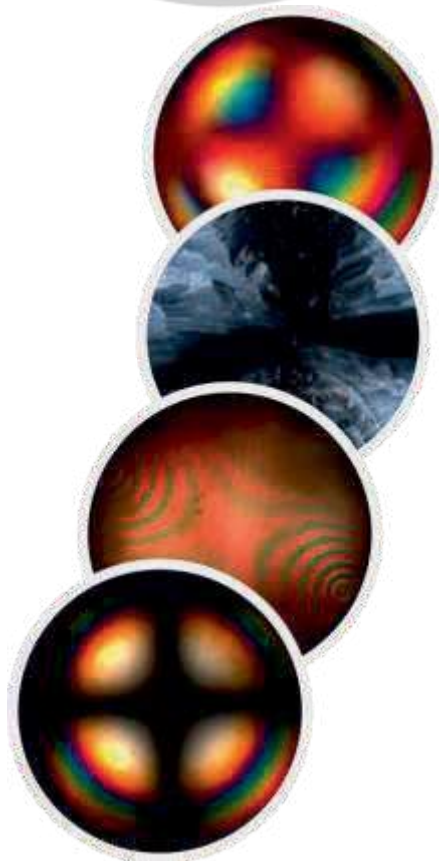
We are a leading manufacturer of high-quality polarizing microscopes, dedicated to empowering researchers and professionals in the field of materials analysis. Our state-of-the-art polarizing microscopes combine precision optics with advanced polarizing capabilities, enabling detailed examination of birefringent materials. With exceptional image clarity, ergonomic design, and robust construction, our polarizing microscopes deliver accurate and reliable results, making them essential tools for geological, mineralogical, and material science research. Trust us for uncompromising quality and unrivaled performance in polarized light microscopy.



Limb type hinged body inclinable 90°. Bertrand lens, sliding analyser 1/4 wave & full wave compensator Ball Bearing mounted, rotatable stage divided 0-360° with vernier Adjustable condenser N.A. 1.25. Polariser duly graduated with in- out system. Objectives P5x, P10x, P40x/45x. Eye-piece 5x( cross), 10x( ocular) & 15x( optional). Plano-concave reflector replaceable by sub-stage L.E.D. Lamp(optional)

**Packaging:** Inner Thermocol/Styrofoam Packing and Outer Cardboard Box.

# STUDENT POLARIZING MICROSCOPE PM-9





- > Monocular head replaceable with Bertrand lens, Sliding Analyzer 1/2 & 1/4 wave compensator.
- > Co-axial Focussing system
- > Rotatable stage divided into 0-360° with vernier
- > Adjustable Condenser N.A. 1.25.
- > Polarizer duly graduated with in- out system. Built in light arrangement with 6V20W halogen lamp.
- > Solid State light control arrangement.
- > Paired eye piece 5x(cross), 10x(ocular), 15x (optional).
- > Objectives P5x, P10x, P40x/45x

**Packaging:** Inner Thermocol/Styrofoam Packing and Outer Cardboard Box.



# STUDENT POLARIZING MICROSCOPE PM-10





- > Binocular head replaceable with Monocular and Trinocular head.
- > Bertrand lens, Sliding Analyzer 1/2 & 1/4 wave compensator.
- > Co-axial Focussing system
- > Rotatable stage divided into 0-360° with vernier
- > Adjustable Condenser N.A. 1.25.
- > Polarizer duly graduated with in- out system. Built in light arrangement with 6V-20W halogen lamp.
- > Solid State light control arrangement.
- > Paired eye piece 5x(cross), 10x(ocular), 15x ( optional).
- > Objectives P5x, P10x, P40x/45x

**Packaging:** Inner Thermocol/Styrofoam Packing and Outer Cardboard Box.

# BINOCULAR POLARIZING MICROSCOPE PM-11





> Trinocular head replacable with Monocular , and Binocular head. Bertrand lens, Sliding Analyzer 1/2 & 1/4 wave compensator. > Rotatable stage divided into 0-360° with vernier > Adjustable Condensor N.A. 1.25. > Co-axial Focussing system > Polarizer duly graduated with in- out system. Built in light arrangement with 6V20W halogen lamp. Solid State light control arrangement. > Paired eye piece 5x( cross), 10x(ocular), 15x (optional). > Objectives P5x, P10x, P40x/45x

**Packaging:** Inner Thermocol/Styrofoam Packing and Outer Cardboard Box.

# TRINOCULAR POLARIZING MICROSCOPE PM-12





- > Both Incident & Transmitted lights are provided for ore Microscopy
- > Binocular head replacable with Monocular , and Trinocular head. Bertrand lens, Sliding Analyzer 1 /2 & 1 /4 wave compensator.
- > Co-axial Focussing system
- > Rotatable stage divided into 0-360° with vernier Adjustable Condensor N.A. 1.25.
- > Polarizer duly graduated with in- out system. Built in light arrangement with 6V-20W halogen lamp.
- > Solid State light control arrangement.
- > Paired eye piece 5x(cross), 10x(ocular), 15x (optional).
- > Objectives P5x, P10x, P40x/45x

**Packaging:** Inner Thermocol/Styrofoam Packing and Outer Cardboard Box.

# ORE MICROSCOPE

## OR-01



**OR-02 with Trinocular Head**



# MULTI MICROSCOPES

# HEAD

As a premier manufacturer of high-quality penta and decahead microscopes, we are dedicated to providing researchers and professionals with exceptional imaging solutions for multi-sample observation. Our advanced multihead microscopes, feature precise positioning, bright illumination, and ergonomic design for efficient sample analysis. With superior optics and robust construction, our penta and decahead microscopes offer unparalleled versatility and reliability, making them ideal tools for diverse laboratory applications. Trust us for cutting-edge technology and uncompromising quality in multi-sample microscopy.



This Microscope comes with Achromatic optical system, which provides a very good optical quality image. Also, with 5 Binocular head system, provided with a wooden table, makes it easier to simultaneously see the sample and study them together for 5 people. High intensity LED lighting makes it easier to view the samples without any stress. This makes the microscope optimum for Medical & Dental College Students.

> 5 Binocular head for multiple view > Wide Field Eyepiece  
WF 10x/18mm > Quadruple Nosepiece > Achromatic  
Objective 4x, 10x, 40x, 100x > Swing Condenser  
N.A.0.9/0.25 > Coaxial Coarse and Fine Adjustment, > Fine  
Division 0.002mm > Plain Layer Mechanical Stage 140mm x  
140mm > Halogen lamp 6V/30W, Brightness Adjustable >  
LED Pointer, Brightness Adjustable

**Packaging:** Inner Thermocol/Styrofoam Packing and Outer  
Cardboard Box.

# PENTAHEAD MICROSCOPE

## X-555





This Microscope comes with Infinity corrected plan optical system, which provides excellent optical quality image makes it easier to simultaneously see the slide and study it together for 10 people. This makes the microscope optimum for Medical/Dental College and Research use.

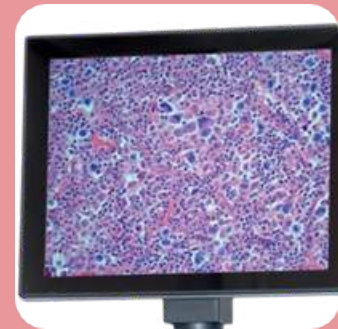
- > 1 Trinocular main Head & 9 Seidentopf Binocular heads inclined at 30°
- > Wide Field Eyepiece EWF 10X/22mm
- > Quadruple Nosepiece
- > Infinity plan Objective 4x , 10x, 40x, 100x
- > Abbe Condenser N.A. 1.25
- > Coaxial Coarse and Fine Adjustment
- > Double Layer Mechanical Stage 180mmx160mm
- > Halogen lamp 12V/1 00W , Brightness Adjustable
- > LED Cursor Pointer, Brightness Adjustable

**Packaging:** Inner Thermocol/Styrofoam Packing and Outer Cardboard Box.

# DECAHEAD MICROSCOPE

## X-10





# DIGITAL & PROJECTION MICROSCOPES

We specialize in crafting high-quality digital microscopes that revolutionize the way researchers and professionals observe and analyze samples. Our advanced digital microscopes combine exceptional optics with state-of-the-art digital imaging technology, allowing for precise imaging, real-time video capture, and seamless connectivity. With user-friendly interfaces and versatile features, our digital microscopes empower users to capture, analyze, and share high-resolution images and videos with ease.

Trust us for unparalleled quality and innovation in digital microscopy.



## Research Microscope with 7" LED Display

### MAIN SPECIFICATIONS

**VIEWING HEAD:** Compensation free Trinocular Head inclined at 45°,

Interpupillary Distance: 55-75 mm

**EYEPIECE (OCULAR):** 10x (paired),  
field of view : 20mm

**Objective :** Achromatic : 4x, 10x, 40x, 100x

**Nosepiece :** Quadruple nosepiece with positive click stops moving on balls

**Focussing System :** Co-axial Coarse and Fine Focusing System, Sensitivity and Graduation of Fine Focus : 0.004mm, Range : 24mm

**CONDENSOR:** Abbe N.A. 1.2

**STAGE:** Double Layer Mechanical Stage, Area: 132X142mm, Movement Range : 75x40mm

**LAMP HOUSE:** LED Lamp 3W

### DISPLAY SPECIFICATIONS

**LED SIZE:** 7" TFT LED Screen (All functions controlled by remote control)

**VALID PIXEL:** 3 M.P.

**POWER:** DC 12V

**Packaging:** Inner Thermocol/Styrofoam Packing and Outer Cardboard Box.

# DIGITAL VIDEO MICROSCOPE

## DVM - 01



BINO



LED



TL



SOFTWARE



SD



230 V



2 DAY





## Research Microscope with 7" LED Display

### MAIN SPECIFICATIONS

**TUBE LENGTH:** 160mm

**VIEWING HEAD:** Compensation free Binocular Head inclined at 30°, Interpupillary Distance: 55-75 mm

**EYEPIECE (OCULAR):** Line field of view : 18mm

**Objective :** Plan Achromatic : 4x, 10x, 40x, 100x

**Nosepiece :** Backward Quadruple Nosepiece

**Focussing System :** Co-axial Coarse and Fine Focusing System, Sensitivity and Graduation of Fine Focus : 0.004mm, Range : 24mm

**CONDENSOR:** Abbe N.A. 1.2

**STAGE:** Double Layer Mechanical Stage, Area: 132X142mm, Movement Range : 75X40mm

**LAMP HOUSE:** Halogen Lamp 6V,20W or LED Lamp 3W  
**Inbuilt Battery Backup Facility**

### DISPLAY SPECIFICATIONS

**LED SIZE:** 7" TFT LED Screen (All functions controlled by remote control)

**VALID PIXEL:** 3 M.P.

**POWER:** DC 12V

**Packaging:** Inner Thermocol/Styrofoam Packing and Outer Cardboard Box.

# DIGITAL VIDEO MICROSCOPE

## DVM - 01 Plus



BINO



LED



TL



SOFTWARE



SD



230 V



2 DAY





## Research Microscope with 9" LED Display

### MAIN SPECIFICATIONS

**VIEWING HEAD:** Compensation free Trinocular Head inclined at 45°, Interpupillary Distance: 55-75 mm

**EYEPIECE (OCULAR):** 10X (paired), field of view : 20mm

**Objective :** Achromatic : 4X, 10X, 40X, 100X

**Nosepiece :** Quadruple nosepiece with positive click stops moving on balls

**Focussing System :** Co-axia Coarse and Fine Focusing System.

Sensitivity and Graduation of Fine Focus : 0.004mm, Range : 24mm

**CONDENSOR:** Abbe N.A. 1.2

**STAGE:** Double Layer Mechanical Stage, Area: 132X142mm, Movement Range : 75X40mm

**LAMP HOUSE:** Halogen Lamp 6V,20W or LED Lamp 3W

### CAMERA SPECIFICATION

**IMAGE SENSOR:** 1/2.5" (4:3), 5 Mega Pixel Color CMOS Sensor

**VALID PIXEL:** 2592H x 1944V

**PIXEL SIZE:** 2.2um x 2.2um

**DYNAMIC RANGE:** 66.5dB

**RESOLUTION & FRAME FREQ.:** Frame Rate -1280x720 15 f/s:640x480 30f/s

**S/N RATIO:** 40.5dB

**SENSITIVITY:** 0.53V/lux-sec(550nm)

### TABLET SPECIFICATION

**LED SIZE:** 9.7inch 1024\*768 IPS LCD

**RAM:** 1GB DDR3 RAM

**ROM:** 2GB Internal Memory, External SD Memory Card, Maximum Capacity Up to 32GB

**BANDING SOFTWARE:** Build-in Microscopy Software (Measuring and Particle Analysis)

**POWER:** DC5V Power

**OPERATING SYSTEM:** Android 4.2.2

**OUTPUT:** HDMI Output, SD Card Support, Bluetooth

**Packaging:** Inner Thermocol/Styrofoam Packing and Outer Cardboard Box.

# DIGITAL VIDEO MICROSCOPE

## DVM - 02



HDMI



BINO



SCALE



LED



TL



SOFTWARE



SD



230 V



2 DAY





### MAIN SPECIFICATIONS

**Viewing Head:** Trinocular Head Inclined at 30°, 360° Rotatable, Interpupillary Distance 54-75 mm. Diopter. Adjustable ± 5 On Left Tube

**Eyepiece (ocular):** Wide Field Eyepiece WF10X/18mm

**Objective :** Plan Achromatic Objectives 4x, 10x, 40x, 100x(oil)

**Nosepiece :** Quadruple Nosepiece

**Focussing System :** Coaxial Coarse and Fine Adjustments, Fine Division 0.002mm, Coarse Stroke 36mm Supplied With An Adjustable Rack Stop To Prevent Damage To Sample And Objectives, The Coarse Adjustment Are Equipped With Friction Control **Condensor:** Abbe Condenser N.A. 1.25 With Iris Diaphragm And Filter Holder **STAGE:** Double Layer Mechanical Stage 110x125mm, Moving Range 30x75mm **Illumination:** 3W LED, Brightness Adjustable, Powered By Outlet 110-240V Adapter

**Adapter:** Eyepiece Tube Adapter

**Inbuilt Battery Backup Facility**

### CAMERA SPECIFICATION

**IMAGE SENSOR:** 1/2.5" (4:3), 5 Mega Pixel Color CMOS Sensor

**VALID PIXEL:** 2592H x 1944V

**PIXEL SIZE:** 2.2µm x 2.2µm

**DYNAMIC RANGE:** 66.5dB

**RESOLUTION & FRAME FREQ.:** Frame Rate -1280x720 15f/s: 640x480 30f/s

**S/N RATIO:** 40.5dB

**SENSITIVITY:** 0.53V/lux-sec(550nm)

### TABLET SPECIFICATION

**LED SIZE:** 9.7inch 1024\*768 IPS LCD Video Capacity

**RAM:** 1GB DDR3 RAM

**ROM:** 2GB Internal Memory, External SD Memory Card, Maximum Capacity Up to 32GB

**BANDING SOFTWARE:** Build-in Microscopy Software (Measuring and Particle Analysis)

**POWER:** DC5V Power

**OPERATING SYSTEM:** Android 4.2.2

**OUTPUT:** HDMI Output, SD Card Support, Bluetooth

**Packaging:** Inner Thermocol/Styrofoam Packing and Outer Cardboard Box.

# DIGITAL VIDEO MICROSCOPE

## DVM - 02 Plus



HDMI



BINO



SCALE



LED



TL



SOFTWARE



SD



230 V



2 DAY





#### MAIN SPECIFICATIONS

**VIEWING HEAD:** Trinocular Head Inclined at 30°, 360° Rotatable, Interpupillary Distance 54-75 mm, Diopter Adjustable ± 5 On Left Tube

**EYEPIECE (OCULAR):** Wide Field Eyepiece WF10X/18mm

**Objective :** Semi Plan Achromatic Objectives 4x, 10x, 40xs, 100xs(oil)

**Nosepiece :** Quadruple Nosepiece

**Focussing System :** Coaxial Coarse and Fine Adjustments, Fine Division 0.002mm, Coarse Stroke 36mm Supplied With An Adjustable Rack Stop To Prevent Damage To Sample And Objectives, The Coarse Adjustment Are Equipped With Friction Control

**CONDENSOR:** Abbe Condenser N.A. 1.25 With Iris Diaphragm And Filter Holder

**STAGE:** Double Layer Mechanical Stage 110X125mm, Moving Range 30x75mm

**LAMP HOUSE:** 3W LED, Brightness Adjustable, Powered By Outlet 110-240V Adapter

#### CAMERA SPECIFICATION

**IMAGE SENSOR:** 1/2.5" (4:3), 5 Mega Pixel Color CMOS Sensor

**VALID PIXEL:** 2592H x 1944V

**PIXEL SIZE:** 2.75µm x 2.75µm

**DYNAMIC RANGE:** 66.5dB

**RESOLUTION & FRAME FREQ.:** Frame Rate - 1024 x 600@30FPS

**S/N RATIO:** 40.5dB

**SENSITIVITY:** 0.53V/lux-sec(550nm)

#### TABLET SPECIFICATION

**LED SIZE:** 9inch 1024\*768 IPS LCD Video Capacity

**RAM:** 1GB DDR3 RAM

**POWER:** DC5V Power

**SYSTEM CONNECTIVITY:** PC Connect through software

**OUTPUT:** USB Output to PC and Mouse Support

**Packaging:** Inner Thermocol/Styrofoam Packing and Outer Cardboard Box.

# DIGITAL VIDEO MICROSCOPE

## DVM - 03





**MAIN SPECIFICATIONS VIEWING HEAD:** Trinocular Head Inclined at 30°, 360° Rotatable, Interpupillary Distance 54-75 mm, Diopter Adjustable  $\pm 5$  On Left Tube **EYEPIECE:** Wide Field Eyepiece WF10X/18mm **Objective :** Plan Achromatic Objectives 4x, 10x, 40xs, 100xs(oil)

**Nosepiece :** Quadruple **Nosepiece**

**Focussing System :** Coaxial Coarse and Fine Adjustments, Fine Division 0.002mm, Coarse Stroke 36mm Supplied With An Adjustable Rack Stop To Prevent Damage To Sample And Objectives, The Coarse Adjustment Are Equipped With Friction Control

**CONDENSOR:** Abbe Condenser N.A. 1.25 With Iris Diaphragm And Filter Holder

**STAGE:** Double Layer Mechanical Stage 110x125mm, Moving Range 30x75mm

**ILLUMINATION:** 3W LED, Brightness Adjustable, Powered By Outlet 110-240V Adapter

**ADAPTER:** Eyepiece Tube Adapter

**Inbuilt Battery Backup Facility**

#### CAMERA SPECIFICATION

**IMAGE SENSOR:** 1/2.5" (4:3), 5 Mega Pixel Color CMOS Sensor

**VALID PIXEL:** 2592H x 1944V

**PIXEL SIZE:** 2.75 $\mu$ m x 2.75 $\mu$ m

**DYNAMIC RANGE:** 66.5dB

**RESOLUTION & FRAME FREQ.:** Frame Rate - 1024 x 600@30FPS

**S/N RATIO:** 40.5dB

**SENSITIVITY:** 0.53V/lux-sec(550nm)

#### TABLET SPECIFICATION

**LED SIZE:** 9inch 1024\*768 IPS LCD Video Capacity

**RAM:** 1GB DDR3 RAM

**POWER:** DC5V Power

**SYSTEM CONNECTIVITY:** PC Connect through software

**OUTPUT:** USB Output to PC and Mouse Support

**Packaging:** Inner Thermocol/Styrofoam Packing and Outer Cardboard Box.

# DIGITAL VIDEO MICROSCOPE

## DVM - 03 Plus







### ACVT-32 A

ACVT32B Series cameras are high end microscope cameras, specially designed for microscope application. Adopt large area array high performance SONY sensor, with image buffer technology. Have various outstanding features like Low noise, High definition, Excellent color reproduction and stable transmission etc.

#### TECHNICAL SPECIFICATIONS

SensorType	Sony
ColorType	Color
Pixel	3MP / 5MP
PixelSize	2.1µm
SensorSize	1/2.5"
ShutterType	Rolling
Resolution	2048X1536 / 2592X1944
DataInterface	USB3.0
FrameRate	6FPS
LensMount	CMountLens



## IMAGING CAMERAS

ACVT-32 A (3MP)



ACVT-32 B (5MP)

### HD-01

- HDMI 1080P 30- frame image output
- USB2.0 driver-free output 1080P 30 frame image output
- 4K video recording
- 16 million photos, JPG format, photo size 4608×3456
- One-key freeze / thaw function
- 16 million pixel camera and 1080P video recording
- Electronic zoom function
- Support manual / automatic exposure, exposure compensation value adjustment
- Support manual / automatic white balance, red, green and blue adjustable
- Provide 8 line drawing functions, line color, thickness, position adjustable
- Provide center crosshair display / close
- Support TF card storage, maximum support 64GB
- Support remote control operation, the picture is clearer without shaking
- Support shutdown parameter saving
- Sturdy metal shell





#### **Illumination**

It comes equipped with 12V 100W Halogen Lamp

#### **Stage**

110 x 110mm square stage is provided with stage clips to hold the slide ( optional Mechanical Stage)

#### **Focussing**

Focussing control knob on both sides of the instrument is conveniently located for easy operation of the rack and pinion with 15mm range.

#### **Nose Piece**

Triple revolving nosepiece with positive click stops.

#### **Screen & Wall Projection**

160mm dia. optically true ground glass screen is provided to have high resolving power. The screen housing is hinged to the body frame and can be removed to one side to have projection on the wall or screen in a dark room

#### **Objectives**

This Microscope is equipped with three Achromatic objectives 5x, 10x & 20x

**Packaging:** Inner Thermocol/Styrofoam Packing and Outer Cardboard Box.

# Projection Microscope (KW-500)



**Body**

Monocular fixed straight tube (Length - 160mm)

**Illumination**

LED Lamp

**Stage**

110 x 110mm square stage is provided with stage clips to hold the slide (optional Mechanical Stage).

**Focussing**

Focussing control knob on both sides of the instrument is conveniently located for easy operation of the rack and pinion with 15mm range.

**Nose Piece**

Triple revolving Nosepiece with positive click stops

**Screen**

150mm diameter glass projection screen is provided which can be rotated over 360 degrees on Microscope tube.

**Objectives**

Achromatic 4x, 10x & 40x

**Packaging:** Inner Thermocol/Styrofoam Packing and Outer Cardboard Box.

# STUDENT PROJECTION MICROSCOPE

(Doom Type)

## KW-700C





# HEATING & REFRIGERATION INSTRUMENTS

We are a leading manufacturer of laboratory ovens and refrigerators, committed to delivering reliable and high-performance solutions for scientific and research applications. Our precision-engineered products offer exceptional temperature control, uniformity, and energy efficiency. With advanced features, robust construction, and strict quality control, our laboratory ovens and refrigerators provide optimal storage and preservation conditions for critical samples, ensuring the integrity of scientific experiments and discoveries. Trust us for dependable and innovative solutions to meet your laboratory's temperature control needs.



# HOT AIR OVEN

Thermostatic

Standard Double wall fabrication. Inner chamber made out of richly anodized aluminium or highly polished stainless steel sheet in white powder coated finish.

The gap between the walls is filled with special grade glass wool for heat insulation.

Inner chamber is ribbed for placing shelves at convenient levels.

Provided with two removable shelves.



Chamber Size (HxWxD)	Capacity
(mm) (inch)	
300x300x300 12x12x12	28 ltrs.
350x350x350 14x14x14	45 ltrs.
450x450x450 18x18x18	95 ltrs.
600x600x600 24x24x24	224 ltrs.
900x900x900 36x36x36	480 ltrs.





Standard Double wall fabrication. Inner chamber made out of richly anodized aluminium or highly polished stainless steel sheet in white powder coated finish.

The gap between the walls is filled with special grade glass wool for heat insulation.

Inner chamber is ribbed for placing shelves at convenient levels.

Provided with two removable shelves.

# HOT AIR OVEN

Digital





# HOT AIR OVEN

(Digital Microprocessor Based)

Standard Double wall fabrication. Inner chamber made out of richly anodized aluminium or highly polished stainless steel sheet in white powder coated finish.

The gap between the walls is filled with special grade glass wool for heat insulation.

Inner chamber is ribbed for placing shelves at convenient levels.

Provided with two removable shelves.

Temperature range 5°C above ambient to 250°C ±1°C controlled with Micro Processor based PID Digital Temperature indicator cum controller.

Panel is provided with pilot lamps for mains & heater, On -off switch & Micro Processor based PID Digital Temperature indicator cum controller.

The equipment is workable on 220VAC 50Hz single phase.

Heating is achieved from 3 sides.



#### Chamber Size (HxWxD)

(mm) (inch)

300x300x300	12x12x12	28 ltrs.
350x350x350	14x14x14	45 ltrs.
450x450x450	18x18x18	95 ltrs.
600x600x600	24x24x24	224 ltrs.
900x900x900	36x36x36	480 ltrs.

#### Capacity



# BACTERIOLOGICAL INCUBATOR (Thermostatic)

Standard Double wall fabrication.

Inner chamber made out of richy anodized aluminium or highly polished stainless steel sheet in white powder coated finish.

The gap between the walls is filled with special grade glass wool for heat insulation.

Inner chamber is ribbed for placing shelves at convenient levels.

Provided with two removable shelves.

Double wall door with double glass window for observation in the chamber is provided.

Temperature range 5°C above ambient to 80°C ±2°C controlled by a thermostat.

L shaped thermometer is provided for taking temperature readings.

Panel is provided with pilot lamps for mains & heaters, On -off switch & temperature control knob.

The equipment is workable on 220V AC 50 Hz single phase.

Heating is achieved from 3 sides.

Chamber Size (HxWxD)		Capacity
(mm)	(inch)	
300x300x300	12x12x12	28 Itrs.
350x350x350	14x14x14	45 Itrs.
450x450x450	18x18x18	95 Itrs.
600x600x600	24x24x24	224 Itrs.
900x900x900	36x36x36	480 Itrs.





# BACTERIOLOGICAL INCUBATOR (Digital)

Standard Double wall fabrication.

Inner chamber made out of richy anodized aluminium or highly polished stainless steel sheet in white powder coated finish.

The gap between the walls is filled with special grade glass wool for heat insulation.

Inner chamber is ribbed for placing a shelves at convenient levels.

Provided with two removable shelves.

Double wall door with double glass window for observation in the chamber is provided.

Temperature range 5°C above ambient to 80°C  $\pm 1^\circ\text{C}$  controlled by Digital Temperature.

Indicator cum controller panel is provided with pilot lamps for mains & heater, On -off switch & digital temperature Indicator cum controller.

The equipment is workable on 220VAC 50Hz single phase.

Heating is achieved from 3 sides.

Chamber Size (HxWxD)		Capacity
(mm)	(inch)	
300x300x300	12x12x12	28 ltrs.
350x350x350	14x14x14	45 ltrs.
450x450x450	18x18x18	95 ltrs.
600x600x600	24x24x24	224 ltrs.
900x900x900	36x36x36	480 ltrs.





# BACTERIOLOGICAL INCUBATOR (Digital Microprocessor Based)

Standard Double wall fabrication.

Inner chamber made out of highly polished stainless steel sheet in white powder coated finish.

The gap between the walls is filled with special grade glass wool for heat insulation. Inner chamber is ribbed for placing shelves at convenient levels.

Provided with two removable shelves.

Double wall door with double glass window for observation in the chamber is provided.

Temperature range 5°C above ambient to 80°C  $\pm 1^\circ\text{C}$  controlled by with Micro Processor based PID Digital Temperature indicator cum controller.

Panel is provided with pilot lamps for mains & heaters, On -off switch & Micro Processor based PID Digital Temperature indicator cum controller.

The equipment is workable on 220V AC 50 Hz single phase.

Heating is achieved from 3 sides.

Chamber Size (HxWxD)		Capacity
(mm)	(inch)	
300x300x300	12x12x12	28 Itrs.
350x350x350	14x14x14	45 Itrs.
450x450x450	18x18x18	95 Itrs.
600x600x600	24x24x24	224 Itrs.
900x900x900	36x36x36	480 Itrs.





# BOD INCUBATOR (Digital)

Designed for low temperature incubation and routine determination of Bio- chemical oxygen Demand (B.O.D) Double wall construction.

Inner chamber made of richy anodized aluminium or highly polished stainless steel sheet with self supports for wide range of shelf spacing.

Supplied with two/ three removable perforate shelves.

Exterior made out of thick mild steel duly finished with powder coating.

Outer double wall door is provided with magnetic gasket and lock & key arrangement. Inner door made out of clear acrylic sheet allowing inspection of material in the chamber without disturbing the chamber temperature.

Door operated inner illumination has been provided. The cabinet is mounted on castor wheels.

Temperature is Controller by Microprocessor based PID Digital temperature indicator cum controller from 5°C to 50°C  $\pm 1^\circ\text{C}$ .

For lower temperature working a standard cooling unit with a sealed compressor with protective devices has been provided below the chamber for safe and efficient working.

Heating arrangement has been made within the chamber for higher temperature working.

A feather touch control panel is provided on the door for easy & user friendly operation.

**Inner Chamber Size(mm)  
(WxDxH)**

**Capacity  
in cu.ft.**

**Capacity**

455 x 410 x 610

4 cu.ft.

112 ltrs.

505 x 415 x 830

6.1 cu.ft.

171 ltrs.

565 x 565 x 865

10 cu.ft.

280 ltrs.

650 x 580 x 900

12 cu.ft.

336 ltrs.

700 x 650 x 900

15 cu.ft.

420 ltrs.





# WATER BATHS & CENTRIFUGE MACHINES

Our company is a leading manufacturer dedicated to producing top-of-the-line centrifuge machines and water baths tailored to meet the specialized needs of laboratories and hospitals. With a relentless commitment to quality and innovation, we have established ourselves as a trusted name in the scientific community. Our centrifuge machines offer precise and efficient separation of substances, ensuring accurate results and enhancing research capabilities. Additionally, our water baths provide a reliable and consistent environment for temperature-sensitive experiments and medical procedures. Committed to excellence, we continuously strive to incorporate the latest advancements in technology to deliver cutting-edge products that empower advancements in scientific and medical fields.



## SEROLOGICAL WATER BATH (Digital/ Thermostatic)

Standard double wall construction inner chamber made of stainless steel & outer of Mild steel duly power coated.

The gap between the walls is filled with glass wool for temperature insulation.

Temperature range 5°C above 95°C controlled by a thermostat OR Micro Processor based PID Digital Temperature indicator cum controller.

The equipment is workable on 220V AC 50Hz single phase.

Heating is attained by an immersion type element with accuracy of  $\pm 1^\circ\text{C}$ .

The baths are supplied without racks, thermometer and stirring arrangement.

**Sizes : a) 12"x10"x4" b) 15"x12"x7"**





# RECTANGULAR SEROLOGICAL WATER BATH

(Digital/ Thermostatic)

Standard double wall construction inner chamber made of stainless steel & outer of Mild steel duly power coated.

The gap between the walls is filled with glass wool for temperature insulation.

The cover with 75mm (3") holes with concentric rings is provided. Temperature range 5°C above 95°C controlled by a thermostat OR Microprocessor based PID Digital Temperature indicator cum controller.

The equipment is workable on 220V AC - 50Hz single phase.

Heating is attained by an immersion type element with accuracy of  $\pm 1^{\circ}\text{C}$ .

Available sizes:

a) 6 Holes b) 12 Holes





**Capacity:** 4x15ml, 6x15ml, 8x15ml(Swing Out Head)

**Mains Input :** 220v, 50HzMax.

**Speed :** Upto 3500 RPM

**Max. R.C.F. :** 1750 x g

**W x D x H:** 300 x 300 x 245mm

**Weight:** 4.0 Kg. Net

**Motor:** Universal (AC/ DC Carbon Brush type )

**Packing:** Nicely Packed in Thermocoal & Cardboard box to prevent damage

Available in 4,6,8 Tubes of 15ml size

# Centrifuge Machine (Handi Type)

## KW-50





**Capacity:** 4x15ml, 6x15ml, 8x15ml(Swing Out Head)

**Mains Input :** 220v,50Hz

**Max. Speed :** Upto 3500 RPM

**Max. R.C.F. :** 1750 x g

**Timer:** 0 - 30 min.

**W x D x H :** 300 x 300 x 245mm

**Weight:** 4.0 Kg. Net

**Motor:** Universal (AC/DC Carbon Brush type )

**Packing:** Nicely Packed in Thermocoal & Cardboard box to prevent damage

**Optional:** Micro tubes heads available at extra price

# Centrifuge Machine (Doctor Model)

## KW-60





The best model for clinical, Pathological, Biochemistry and pharmacy/pharmaceutical Labs and to separate blood serum

**Specifications:**

- >General Purpose Bench Top laboratory Centrifuge Machine
- >Heavy duty C. R. C construction finished with powder coating
- > See through Acrylic moulded lid which is light weight to avoid accident
- > Inter lid lock and metallic centrifuge bowl for safety
- > Microprocessor based programmable speed control from 500 to 5000 r.p.m depending upon the type of rotor and Digital timer (0-59 minutes)
- > Supply is completed with 8x15ml Angle head, instruction manual, spare fuses, cord & plug to work on 220volts 50Hz A.C.
- > Available in 12x15ml, 16x15ml, 20x15ml tube sizes

# DIGITAL/ANALOG Centrifuge Machine

## KW-80/80A





# LAMINAR AIR FLOW & CABINETS

We specialize in manufacturing laminar air flows and biosafety cabinets, catering to the critical needs of laboratories and cleanrooms. Our advanced products, provide reliable protection from airborne contaminants, ensuring a safe and sterile work environment for sensitive experiments and procedures. With precision engineering, HEPA filtration, and strict adherence to international safety standards, our laminar air flows and biosafety cabinets offer superior performance and peace of mind for researchers and technicians. Trust us for exceptional quality and cutting-edge technology in air containment solutions.



# LAMINAR AIR FLOW HORIZONTAL WOODEN

Microprocessor  
Based

- Switches:** MicroProcessor based switches for blower. LED light & UV light. with LED back light display. (UV light with Timer).
- Pre-filter:** 90.00% down to 5 micron
- HEPA Filter:** ISO 14644 Class 5 (Class 100) 99.97%-99.99%. Down to 0.3 micron. Mesh guard for protection of HEPA Filter.
- Airflow:** Frontward Horizontally
- Noise Level:** 60 decibel  $\pm$  0.5%
- Velocity:** 0.35-0.50m/sec
- Work Table:** Made up of Stainless Steel 304 gr. Cock for gas on work table.
- Side Panels:** 6mm  $\pm$  0.50m/sec
- Front door:** Made of acrylic. (Foldable)
- UV Lamp:** 15/30W, make Philips Holland.
- Illumination:** LED White Light
- Pressure:** Digital Manometer 0-50mm range with filter failure alarm.
- Power Supply:** 230V  $\pm$  10V/50Hz single phase A.C.binet:
- Cabinet:** 19mm thick Durga-board Covered with mica from outside and epoxy painted from inside.
- Heavy Duty Blower:** Dynamically balanced with 0.25 HP Electric Motor Mounted on anti vibration pad 1440rpm mo.tor





# LAMINAR AIR FLOW VERTICAL StainlessSteel

- Switches:** MicroProcessor based switches for blower. LED light & UV light. with LED back light display. (UV light with Timer).
- Pre-filter:** 90.00% down to 5 micron
- HEPA Filter:** ISO 14644 Class 5 (Class 100) 99.97%-99.99%. Down to 0.3 micron. Mesh guard for protection of HEPA Filter.  
Top to downward
- Airflow:** 60 decibel  $\pm$  0.5%
- Noise Level:** 0.35-0.50m/sec
- Velocity:** Made up of Perforated Stainless Steel 304 gr. Cock for gas on work table. 6mm  $\pm$  0.50m/sec
- Work Table:** Made of acrylic.
- Side Panels:** 15/30W, make Philips Holland. LED Light for easy operation. Digital
- Front door:** Manometer 0-50mm range with filter failure alarm.
- UV Lamp:**
- Illumination:**
- Pressure:**
- Power Supply:** 230V  $\pm$  10V/50Hz single phase A.C.
- Cabinet:** Cabinet made of 304 grade Stainless Steel.
- Heavy Duty Blower:** Dynamically balanced with 0.25 HP Electric Motor Mounted on anti vibration pad 1440rpm mot.or

**Notes:**

- All Sizes are available in Wooden/Mild steel/ Stainless Steel Models
  - Working area size 60x60x60 cm.
  - Working area size 90x60x60 cm.
  - Working area size 120x60x60 cm.
  - Working area size 180x60x60 cm.
- Analog/Digital Controller available in all models





# BIOSAFETY CABINET CLASS-II, A-2 MILDSTEEL

<b>Switches:</b>	Microprocessor based switches for Blower, LED light & UV light with LED backlight display. UV light with Timer
<b>HEPA Filter:</b>	ISO 14644 Class 5 (Class 100) 99.97%-99.99%. Down to 0.3 micron, Mesh guard for protection of HEPA Filter
<b>Airflow:</b>	Vertical, 70% of the air volume is re-circulated, 30% is exhausted.
<b>Noise Level:</b>	60 decibel $\pm$ 5%
<b>Velocity:</b>	0.35-0.50m/sec
<b>Work Table:</b>	Made up of Perforated Stainless Steel 304 grade. Cock for gas on work table.
<b>Front door:</b>	Made of acrylic duly counter balanced.
<b>UV Lamp:</b>	15/30W, make Philips Holland
<b>Illumination:</b>	LED Light for easy operation
<b>Pressure:</b>	Digital Manometer 0-50mm range with filter Failure alarm
<b>Power Supply:</b>	230V $\pm$ 10V/50Hz single phase A.C
<b>Cabinet:</b>	M.S Frame in powder coated paint finish.
<b>Heavy Duty Blower:</b>	Dynamically balanced with 0.25 HP Electric Motor Mounted on anti vibration pad 1440rpm motor
<b>Virus Burn Our:</b>	Fitted with exhaust and HEPA Filter for environment protection
<b>Stand:</b>	Fitted with Castor Wheels for easy movability. Front Wheels lockable with brakes

#### Notes:

- All Sizes are available in Wooden/Mild steel/ Stainless Steel Models
  - Working area size 60x60x60 cm.
  - Working area size 90x60x60 cm.
  - Working area size 120x60x60 cm.
  - Working area size 180x60x60 cm.
- Analog/Digital Controller available in all models





# BIOSAFETY CABINET

## CLASS-II, A-2 STAINLESS STEEL

<b>Switches:</b>	Microprocessor based switches for Blower, LED light & UV light with LED backlight display. UV light with Timer
<b>HEPA Filter:</b>	ISO 14644 Class 5 (Class 100) 99.97%-99.99%. Down to 0.3 micron, Mesh guard for protection of HEPA Filter
<b>Airflow:</b>	Vertical, 70% of the air volume is re-circulated, 30% is exhausted.
<b>Noise Level:</b>	60 decibel $\pm$ 5%
<b>Velocity:</b>	0.35-0.50m/sec
<b>Work Table:</b>	Made up of Perforated Stainless Steel 304 grade. Cock for gas on work table.
<b>Front door:</b>	Made of acrylic duly counter balanced.
<b>UV Lamp:</b>	15/30W, make Philips Holland
<b>Illumination:</b>	LED Light for easy operation
<b>Pressure:</b>	Digital Manometer 0-50mm range with filter Failure alarm
<b>Power Supply:</b>	230V $\pm$ 10V/50Hz single phase A.C Made of 304 grade Stainless Steel Dynamically balanced with 0.25 HP Electric Motor Mounted on anti vibration pad 1440rpm mot.or
<b>Cabinet:</b>	Fitted with exhaust and HEPA Filter for environment protection
<b>Heavy Duty Blower:</b>	Fitted with Castor Wheels for easy movability. Front Wheels lockable with brakes
<b>Virus Burn Our:</b>	
<b>Stand:</b>	

### Notes:

- All Sizes are available in Wooden/Mild steel/ Stainless Steel Models
  - Working area size 60x60x60 cm.
  - Working area size 90x60x60 cm.
  - Working area size 120x60x60 cm.
- Analog/Digital Controller available in all models





# FUME HOOD

Stainless Steel/  
Mild Steel/Wooden

The work surface of granite/Stainless Steel is fitted with small wash basin & good quality tap.

A gas cock is also fitted. Sliding sash made of polycarbonate/toughened glass moves vertically up and down with concealed counter balanced weights.

Chamber is fitted with 36W polycarbonate fluorescent light assembly.

Space underneath the work surface is provided with storage compartment.

15/5 Amp socket with switches are provided for light and exhaust system.

Supplied with cord and plug to work on 220 volts 1/3 phase 50 Hz A.C.

Complete with motor blower for exhaust system and Duct to take out fumes.





# FUME HOOD

Stainless Steel/  
Mild Steel/Wooden

- ✔ Made of Stainless Steel.
- ✔ Granite/Stainless Steel Working Platform.
- ✔ High Speed Centrifugal Blowers.
- ✔ Front Sash with counter weights.
- ✔ LED illumination lights.
- ✔ Water tap and PP sink
- ✔ Provision for gas and air Connection Storage cup board
- ✔ 15/5 Amp Switches and Socker.

#### Notes:

1. All Sizes are available in Wooden/Mild steel/ Stainless Steel Models
  - (a) Working area size 90x60x60 cm
  - (b) Working area size 120x60x60 cm
  - (c) Working area size 120x75x75 cm
  - (d) Working area size 150x75x75 cm
2. Analog/Digital Controller available in all models





# METALLURGICAL MICROSCOPES

Almicro Instruments is a trusted manufacturer of metallurgical microscopes, catering to the specific needs of metallurgical analysis and research. Our metallurgical microscopes offer advanced features like polarized light, high magnification, and precision optics, ensuring accurate and detailed examination of metal samples. With our commitment to quality and reliability, we provide researchers, engineers, and professionals in the metallurgical industry with powerful tools to enhance their analysis, enabling them to make informed decisions and drive advancements in materials science and engineering. Choose Almicro Instruments for superior metallurgical microscopes that deliver exceptional performance and contribute to your success in the field.



ALMICRO Inclined Metallurgical Microscope comes fitted with Monocular observation tube inclined at 45°. It is provided with Bright field horizontal illuminator with centering provision, field and aperture diaphragm, and slots for dropping filter. It comes equipped with Quadruple revolving nose piece.

There is a Special graduated mechanical stage for easy study of the samples and is supplied with variable light control transformer and following optics in box :

**LWD Objectives: M10X and M45X (SL)**

**Wide Field Eye pieces: WF10X and H15X**

**Packaging:** Inner Thermocol/Styrofoam Packing and Outer Cardboard Box.

# Inclined Metallurgical Microscope

## MM-2





Binocular Head having Hard Coated Prisms  
Bright Field horizontal illuminator with centering provision  
Quadruple revolving nose piece  
Special Graduated mechanical stage  
Variable light control through Heavy-Duty transformer

**Objectives : 10x, 45x**  
**Optional objectives : 5x, 100x**  
**Eye-pieces : WF10x (paired)**  
**Magnification : 100x to 450x.**

**Packaging:** Inner Thermocol/Styrofoam Packing and  
Outer Cardboard Box.

# Binocular Metallurgical Microscope

## MM-3



# Trinocular Metallurgical Microscope

## MM-4

All New Design Trinocular Head having Hard coated prisms Quadruple revolving Ball Bearing Nose piece Double layered and Fine Focusing system Special graduated mechanical stage with low positioned coaxial knobs

Bright 12V, 50W Halogen Light with Solid state power supply circuitry.

Semi-plan Achromatic objectives, Wide Field Eye Piece (Hard Coated) for better results for all magnifications.

Special Green and Brown filters for studying various samples

**Objectives: 5x, 10x, 20x, 45x**

**Eye pieces : WF 10x (Paired)**

**Packaging:** Inner Thermocol/Styrofoam Packing and Outer Cardboard Box.





Presenting our latest model of trinocular inverted metallurgical microscope having co-axial coarse and fine motion assembled on ball bearing guides. It is equipped with horizontal illuminator with centering provision, field and aperture diaphragm and slots for dropping filters. Built in base, variable solid state transformer. Large sturdy stage with X-Y axis movements for optimum study of sample.

**Objectives:** M5x, M10x, M20x, M40x/45x

**Eye pieces:** WF 10x (Paired)

**Optional Objectives:** 100x

**Magnification :** 50x to 450x

**Packaging:** Inner Thermocol/Styrofoam Packing and Outer Cardboard Box.

# Inverted Metallurgical Microscope MM-5





Presenting our latest model of trinocular inverted metallurgical microscope having co-axial coarse and fine motion assembled on ball bearing guides. It is equipped with horizontal illuminator with centering provision, field and aperture diaphragm and slots for dropping filters. Built in base, variable solid state transformer. Large sturdy stage with X-Y axis movements for optimum study of sample.

#### Head

Compensation Free Trinocular Head, 45° Inclined, 360° Rotatable, Interpapillary Distance 54-75mm, Diopter Adjustable, Light Split 8:2

#### Objectives

Long Working Distance Plan Metallurgical Achromatic (LMPL5X/0.15, LMPL10X/0.3, LMPL20X/0.4)

Long Working Distance Plan Metallurgical Achromatic, Semi-APO (LMPL50X/0.6)

#### Stage

Triple Layer Working Stage, Size 180\*155mm,  
Moving Range 75\*40mm  
Metal Plate, Center Hole Dia. 25mm  
Metal Plate, Center Hole Dia. 12mm

#### Focusing

Low Position Coaxial Coarse & Fine Focusing, Coarse Focus Range 38mm. Fine Focusing Precision 0.002mm, with Tension Adjustment. with Up-limited Stop

#### Condenser

Swing-out Condenser N.A.0.7, for Transmit Light

#### Filter

Blue Filter, Dia. 32mm

#### Illumination

Reflect Kohler Illumination, with View Field Diaphragm, with Iris Diaphragm, Center Adjustable, 5W LED, Warm Light, Brightness Control

**Packaging:** Inner Thermocol/Styrofoam Packing and Outer Cardboard Box.

# Inverted Metallurgical Microscope

## MM-5A





Brinell Microscope features a calibrated reticle in a flat field optical system. This Microscope makes accurate measurements of the indentations for all Brinell type hardness testers.

Our Brinell Microscope MMP-6 is Compact, Durable & very accurate thus making it suitable for both Shop and Laboratory use. This Microscope is designed to easily measure the Brinell hardness value of different ferrous and non-ferrous metals. It can determine the brinell hardness by measuring the diameter of the indentations.

**Magnification: 25X**

**Reticle scale length: 6.0 mm**

**Scale divisions: 0.1 mm**

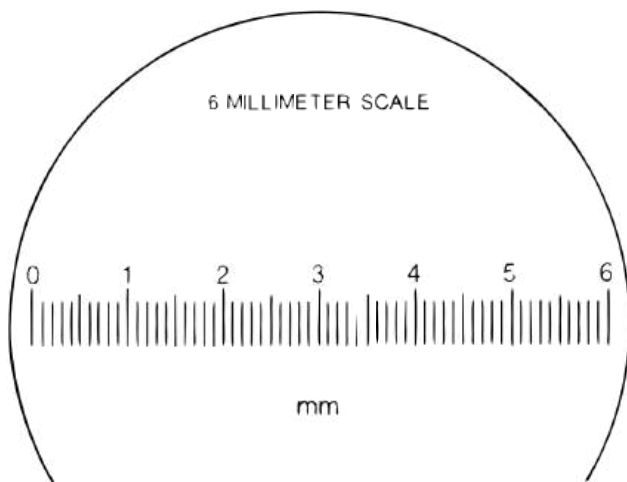
**Field diameter: 7.0 mm**

**Illumination: Changeable LED Lamp**

**Packaging: Inner Thermocol/Styrofoam Packing and Outer Cardboard Box.**

# BRINELL MICROSCOPE

## MM-6



The Scale is Calibrated in 0.1 mm units over a range of 6mm. The Diameter of the microscope field is 7mm



This Microscope has X-Y movement on ball bearing slides, having micrometer (50mm dia) Least Count - 0.01 or 0.005mm with goniometer. Fixed magnification 30x. 150x150mm stage, and 360° rotary head. Having both transmitted & incident light. This comes packed in a wooden box.

**Technical Specifications:**

**Observation Tube**

Monocular, Inclined at 30-degrees.

**Base**

Large and heavy base provides extra overall rigidity to the instrument.

**Stage**

150mm X 150mm size assembled on ball bearing guides to provide accurate and smooth stage stroke upto 50mm in each direction.

**Illumination**

Sub-stage lamp emits transmitted light from a bottom source equipped with halogen lamp.

**Packaging:** Inner Thermocol/Styrofoam Packing and Outer Cardboard Box.

# TOOL MAKER MICROSCOPE

## KW-900





Our Travelling microscope (VM-1) consists of a cast iron base with machined vee-top surface and is fitted with three levelling screws, one being fixed the microscopes can travel Horizontally 22 cm. and vertically 15 cms. with the help of slides. Two slow motion knobs are provided for taking accurate readings.

Vernier readings 0.01 mm. or 0.02 mm.

Milky cenolite sheet is provided on the base for the placing objects on horizontal stage.

Nicely packed in wooden box. with following optics:

Objective - Achromatic 2x (FL-50mm)

Eye Piece - 10x with cross hair line

**Packaging:** Inner Thermocol/Styrofoam Packing and Outer Cardboard Box.

# Travelling Microscope

## VM-1





Deluxe Travelling Microscope (VM-2B) for three axes measurement Horizontal, vertical and right angled transverse motion with rack and pinion mechanism. The microscope can travel horizontally 20cm, vertically 15cm & right angled transverse movement 25mm. Nicely packed in wooden box. with following optics:  
Objective - Achromatic 2x (FL-50mm)  
Eye Piece - 10x with

**Packaging:** Inner Thermocol/Styrofoam Packing and Outer Cardboard Box.

# Travelling Microscope

## VM-2





# **YSP- MICROSCOPE & LAB PRODUCT MODELS**



## **CONTENT US**

**YSPSCIENTIFIC@GMAIL.COM**

**SALES.YSPSCIENTIFIC@GMAIL.**

**+ 91 96262 97366**

**+ 91 73387 21875**

**B: 25 G1, GROUND FLOOR, #7/10  
ANNAI AVANTHIKA VENGAIVASAL,  
CHENNAI - 600100**



**BEST  
PRICE**